

RESINSE





# PROFESSIONAL CATALOGUE

---

Following the success of previous editions, it is my pleasure to present you the **fourth edition** of our **PROFESSIONAL CATALOGUE**, intended for all the professionals in the hospitality industry: hotel managers, housekeepers, purchasing managers, F&B, head waiters, decorators, architects, interior designers...

In its more than 100 pages, you will find everything that you need with regard to linen trends, with the sizes, weights, qualities, compositions, etc. of bath linen, bed linen and table linen. And through the numerous photos you will **get to touch** our products, where we show you some of the thousands of real settings we have created.

After more than **40 years of experience**, we fully understand our customers' needs, and we adapt to each type of establishment, to the culture of the country and to the current trends, which makes us **your guide in terms of textiles**. In all cases, the important thing is the satisfaction of our customers, for whom we design and manufacture **customized products** with an excellent quality which is present in all our items.

Our **R&D&i** team works constantly on new developments, with a highly technological approach.

We are permanently working on improvements at all levels of production, management and use of our products, complying with all the sustainability parameters, both environmental and of corporate social responsibility. To ensure compliance with those requirements, we have the global certification **Standard STeP**, Sustainable Textile Production, audited and issued by the International Association OEKO-TEX®.

I hope this catalogue is very helpful for your work and please remember to always choose **quality** products that are **environmentally friendly**, respect **human rights** and are **suitable for industrial laundry**.

We are at your entire disposal for any questions you may have.

With best regards,

Félix Martí Sempere  
RESUINSA

# INDEX

---

## BATH

---

Towels - Single loop terry.....	6-15
Towels - Double loop terry.....	16-23
Light towels.....	24-25
Bathrobes.....	26-35
Bath slippers.....	36
Shower curtains.....	37
Beach towels - Single loop terry.....	38-39
Beach towels - Double loop terry.....	40-45
Bath linen photographs.....	46-49

## ROOM

---

Pillows and square pillows.....	52-53
Pillow menu.....	54-61
Inside cases.....	62-63
Bed mats.....	62-63
Mattress protectors.....	64-69
Toppers.....	70-73
Duvets.....	74-75
Blankets.....	76-79
Quilts.....	80-83
Collection percale (taffeta) sheets.....	84-85
Collection sateen (plain) sheets.....	86
Collection sateen (striped design) sheets.....	87

---

## ROOM

---

Collection sateen (designs latest trends) sheets.....	88-91
Sheets confections.....	92-93
Pillowcases confections.....	94-95
Duvet covers confections.....	96-97
Customization.....	98-99
Bedskirts and plaids.....	100-101
Bed linen photographs.....	102-103

## RESTAURATION

---

Table linen: Sateen.....	106-107
Table linen: Weft colour.....	108-109
Table linen: Linen.....	110-111
Table runners.....	112-113
Table linen confections.....	114-115
Chair covers.....	116-117
Table linen photographs.....	118-121

## RESUINSA

---

RFID.....	122
Textiles suitable for industrial laundry.....	123
OEKOTEX - STeP.....	124
OEKOTEX - Standard 100.....	125
We are all around the world.....	126



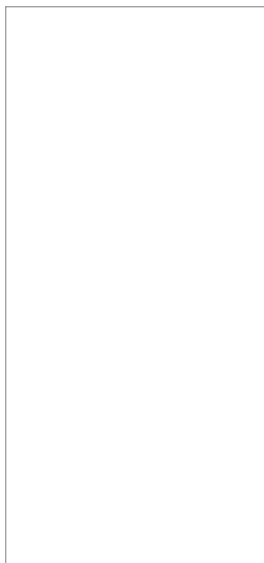
**BATH**

---

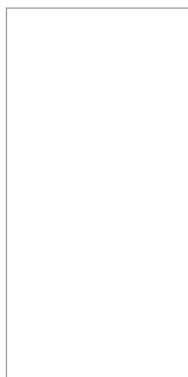
## TOWELS REF. RHIN 420 G/M<sup>2</sup>

---

100% cotton extra, single loop terry.  
White colour.  
Maximum softness, minimal shrinkage.  
Special confection.



70 x 150 cm  
28" x 59"  
420 g/m<sup>2</sup>  
**Bath towel**



50 x 100 cm  
20" x 39"  
420 g/m<sup>2</sup>  
**Hand towel**

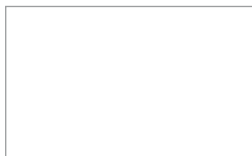


30 x 30 cm  
12"x12"  
480 g/m<sup>2</sup>  
**Face towel**

## BATH MAT REF. LISA 650 G/M<sup>2</sup>

---

100% cotton extra, double loop terry.  
White colour.  
Maximum softness, minimal shrinkage.  
Special confection.



50 x 60 cm  
20" x 24"  
650 g/m<sup>2</sup>  
**Bath mat**

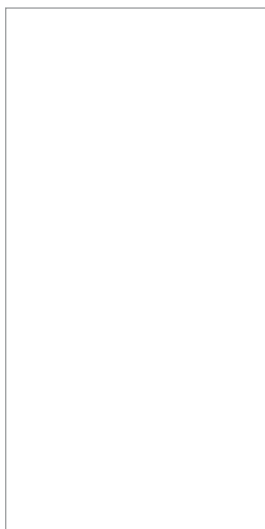




## TOWELS REF. SENA 500 G/M<sup>2</sup>

---

100% cotton extra, single loop terry.  
White colour.  
Maximum softness, minimal shrinkage.  
Special confection.



70 x 140 cm  
28" x 55"  
500 g/m<sup>2</sup>  
**Bath towel**



50 x 90 cm  
20" x 35"  
500 g/m<sup>2</sup>  
**Hand towel**



30 x 30 cm  
12"x12"  
480 g/m<sup>2</sup>  
**Face towel**

## BATH MAT REF. MARCO 850 G/M<sup>2</sup>

---

100% cotton extra, double loop terry.  
White colour.  
Maximum softness, minimal shrinkage.  
Special confection.



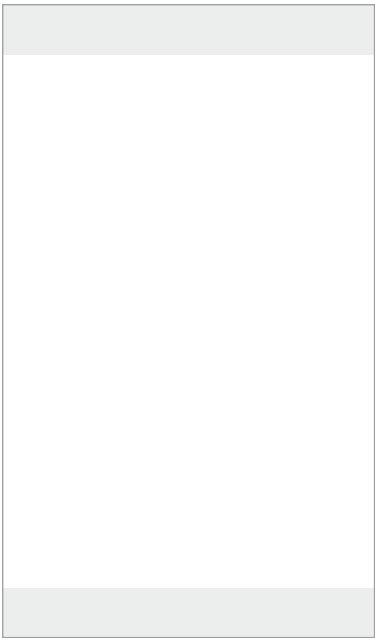
50 x 70 cm  
20" x 28"  
850 g/m<sup>2</sup>  
**Bath mat**



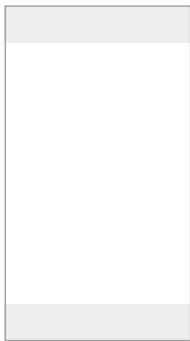


## TOWELS REF. LIRO 580 G/M²

100% cotton extra, single loop terry.  
White colour.  
Maximum softness, minimal shrinkage.  
Special confection.



100 x 170 cm  
40" x 67"  
580 g/m²  
**Bath towel**



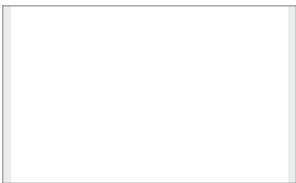
50 x 90 cm  
20" x 35"  
580 g/m²  
**Hand towel**



30 x 50 cm  
12" x 20"  
520 g/m²  
**Face towel**

## BATH MAT REF. LIRO 800 G/M²

100% cotton extra, double loop terry.  
White colour.  
Maximum softness, minimal shrinkage.  
Special confection.



50 x 70 cm  
20" x 28"  
800 g/m²  
**Bath mat**

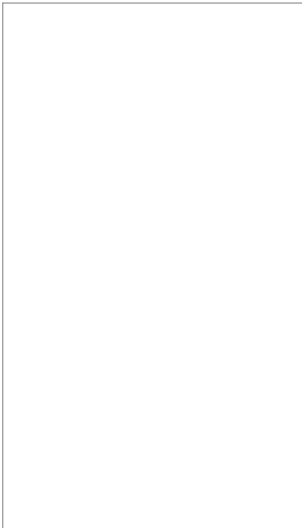




**TOWELS REF. LIENA 650 G/M²**

---

100% cotton extra, single loop terry.  
White colour.  
Maximum softness, minimal shrinkage.  
Special confection.



80 x 140 cm  
32" x 55"  
650 g/m²  
**Bath towel**



40 x 70 cm  
16" x 28"  
580 g/m²  
**Hand towel**

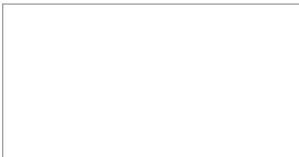


30 x 30 cm  
12"x12"  
480 g/m²  
**Face towel**

**BATH MAT REF. LISA 700 G/M²**

---

100% cotton extra, double loop terry.  
White colour.  
Maximum softness, minimal shrinkage.  
Special confection.



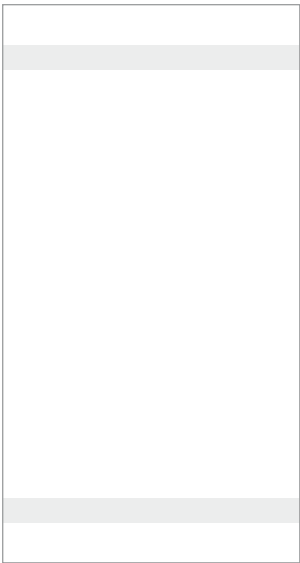
50 x 80 cm  
20" x 31"  
700 g/m²  
**Bath mat**





**TOWELS REF. ABELIA 600 G/M²**

100% cotton extra, single loop terry.  
White colour.  
Maximum softness, minimal shrinkage.  
Special confection with distinctive dobby borders.

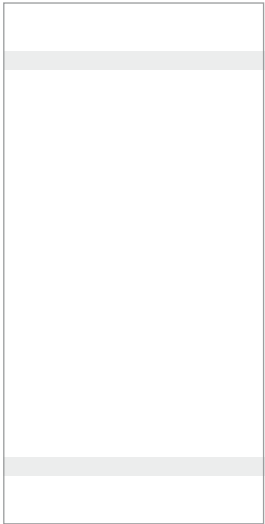


80 x 150 cm  
31" x 59"  
600 g/m²  
**Bath towel**



50 x 100 cm  
20" x 39"  
600 g/m²  
**Hand towel**

European sizes



70 x 140 cm  
28" x 55"  
600 g/m²  
**Bath towel**

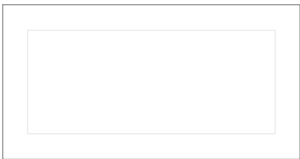


40 x 76 cm  
16" x 30"  
600 g/m²  
**Hand towel**

European sizes

**BATH MAT REF. ABELIA 800 G/M²**

100% cotton extra, double loop terry.  
White colour.  
Maximum softness, minimal shrinkage.  
Special confection.



50 x 80 cm  
20" x 31"  
800 g/m²  
**Bath mat**

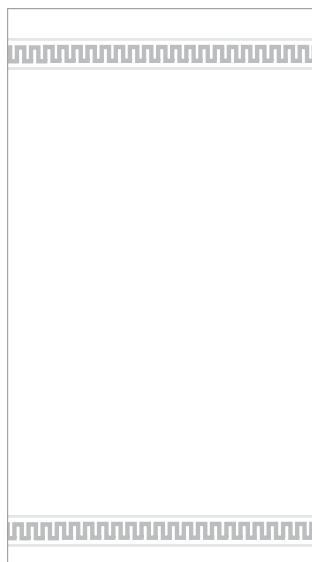




## TOWELS REF. GRECA 450 G/M<sup>2</sup>

---

100% cotton extra, double loop terry.  
White colour.  
Maximum softness, minimal shrinkage.  
Special confection.



70 x 150 cm  
28" x 59"  
450 g/m<sup>2</sup>  
**Bath towel**



50 x 100 cm  
20" x 39"  
450 g/m<sup>2</sup>  
**Hand towel**



30 x 30 cm  
12"x12"  
520 g/m<sup>2</sup>  
**Face towel**

## BATH MAT REF. GRECA 800 G/M<sup>2</sup>

---

100% cotton extra, double loop terry.  
White colour.  
Maximum softness, minimal shrinkage.  
Special confection.



50 x 65 cm  
20" x 26"  
800 g/m<sup>2</sup>  
**Bath mat**

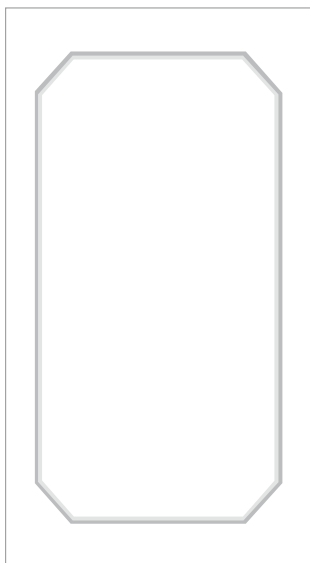




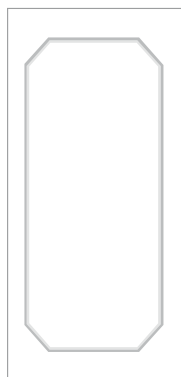
## TOWELS REF. MARCO 480 G/M<sup>2</sup>

---

100% cotton extra, double loop terry.  
White colour.  
Maximum softness, minimal shrinkage.  
Special confection.



80 x 150 cm  
31" x 59"  
480 g/m<sup>2</sup>  
**Bath towel**



50 x 100 cm  
20" x 39"  
480 g/m<sup>2</sup>  
**Hand towel**



30 x 30 cm  
12"x12"  
520 g/m<sup>2</sup>  
**Face towel**

## BATH MAT REF. MARCO 850 G/M<sup>2</sup>

---

100% cotton extra, double loop terry.  
White colour.  
Maximum softness, minimal shrinkage.  
Special confection.



50 x 70 cm  
20" x 28"  
850 g/m<sup>2</sup>  
**Bath mat**

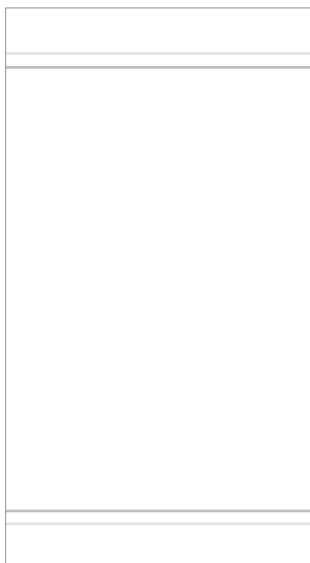




## TOWELS REF. LÍNEAS 520 G/M<sup>2</sup>

---

100% cotton extra, double loop terry.  
White colour.  
Maximum softness, minimal shrinkage.  
Special confection.



100 x 150 cm  
39" x 59"  
520 g/m<sup>2</sup>  
**Bath towel**



50 x 100 cm  
20" x 39"  
520 g/m<sup>2</sup>  
**Hand towel**



30 x 30 cm  
12"x12"  
520 g/m<sup>2</sup>  
**Face towel**

## BATH MAT REF. MARCO 850 G/M<sup>2</sup>

---

100% cotton extra, double loop terry.  
White colour.  
Maximum softness, minimal shrinkage.  
Special confection.



50 x 70 cm  
20" x 28"  
850 g/m<sup>2</sup>  
**Bath mat**

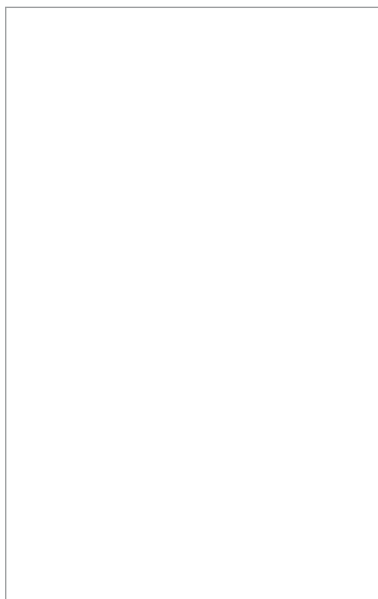




## TOWELS REF. TÁMESIS 560 G/M<sup>2</sup>

---

100% cotton extra, double loop terry.  
White colour.  
Maximum softness, minimal shrinkage.  
Special confection.



100 x 160 cm  
39" x 63"  
560 g/m<sup>2</sup>  
**Bath towel**



50 x 100 cm  
20" x 39"  
560 g/m<sup>2</sup>  
**Hand towel**

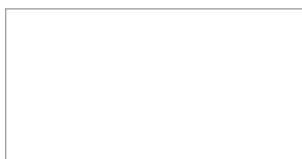


30 x 30 cm  
12"x12"  
520 g/m<sup>2</sup>  
**Face towel**

## BATH MAT REF. LISA 700 G/M<sup>2</sup>

---

100% cotton extra, double loop terry.  
White colour.  
Maximum softness, minimal shrinkage.  
Special confection.



50 x 80 cm  
20" x 31"  
700 g/m<sup>2</sup>  
**Bath mat**





## TOWELS REF. SWISS

---

Composition: Damask 100% cotton.

Confection: Hems of 1 cm.

White colour.

Maximum softness.

Special confection.



51 x 96 cm

20" x 38"

**Light towel**

## TOWELS REF. PIQUÉ

---

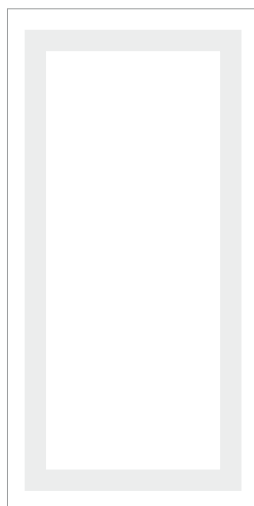
Composition: Damask 100% cotton.

Confection: Hems of 1 cm.

White colour.

Maximum softness.

Special confection.



50 x 100 cm

20" x 39"

**Light towel**





## **BATHROBE REF. MILENIUM**

---

100% cotton extra.

Single loop terry.

White colour.

Confection with smoking collar.

Two standard pockets, with an optional top pocket.

Woman size (L) and Man size (XL)

Weight 380 g/m<sup>2</sup>

## **BATHROBE REF. SMOKING**

---

100% cotton extra.

Single loop terry.

White colour.

Confection with smoking collar.

Two standard pockets, with an optional top pocket.

Woman size (L) and Man size (XL)

Weight 450 g/m<sup>2</sup>



## **BATHROBE REF. TUNDIDO CLASSIC**

---

100% cotton extra.

Velour terry, smooth to the touch.

White colour.

Confection with smoking collar.

Two standard pockets, with an optional top pocket.

Woman size (L) and Man size (XL)

Special size (XXL)

Weight 450 g/m<sup>2</sup>

## **BATHROBE REF. TUNDIDO SPECIAL**

---

100% cotton extra.

Velour terry, smooth to the touch.

White colour.

Confection with smoking collar.

Two standard pockets, with an optional top pocket.

Woman size (L) and Man size (XL)

Weight 550 g/m<sup>2</sup>



## BATHROBE REF. MÓNACO

---

100% cotton extra.

Exterior with velour terry and vertical stripes, smooth to the touch.

Interior double loop terry.

White colour.

Confection with smoking collar.

Two standard pockets, with an optional top pocket.

Woman size (L) and Man size (XL)

Weight 420 g/m<sup>2</sup>





## BATHROBE REF. BRIKEN

---

100% sanforized cotton.

Waffle design.

White colour.

Confection with smoking collar.

Velour finish on the collar, cuffs and pockets.

Two standard pockets, with an optional top pocket.

Velour belt.

Woman size (L) and Man size (XL)

Special sizes (XXL y XXXL)

Weight 250 g/m<sup>2</sup>



## BATHROBE REF. BÉRGAMO

---

50% polyester 50% sanforized cotton.

Waffle design.

White colour.

Confection Kimono collar and three-quarter length sleeves.

Two standard pockets.

Woman size (L) and Man size (XL)

Weight 250 g/m<sup>2</sup>





## BATHROBE REF. NIDO DE ABEJA

---

100% sanforized cotton.

Waffle design.

White colour.

Confection with smoking collar.

Two standard pockets, with an optional top pocket.

Woman size (L) and Man size (XL)

Special size (XXL)

Weight 250 g/m<sup>2</sup>



## BATHROBE REF. DYNAMIC

---

Exterior fabric: 100% cotton.

Interior fabric: 100% cotton terry.

White colour.

Confection Kimono collar, raglan sleeves.

Two standard pockets.

Woman size (L) and Man size (XL)

Weight 450 g/m<sup>2</sup>



## BATHROBE REF. PARMA PLUS

---

100% cotton extra.

Crossed ligament (Diamond)

Velour finish on the collar, cuffs and pockets.

White colour.

Confection with smoking collar.

Two standard pockets.

Woman size (L) and Man size (XL)

Weight 300 g/m<sup>2</sup>



## BATHROBE REF. BOLONIA

---

100% cotton extra.

Exterior fabric: Crossed ligament.

Interior fabric: Double loop terry.

White colour.

Confection with smoking collar with piping.

Two standard pockets.

Woman size (L) and Man size (XL)

Weight 490 g/m<sup>2</sup>





## BATHROBE REF. MÓDENA

---

100% cotton extra.

Velour terry with waffle design.

Black colour.

Confection with smoking collar.

Two standard pockets.

Woman size (L) and Man size (XL)

Weight 420 g/m<sup>2</sup>



## BATH SLIPPERS REF. RELAX

---

92% Cotton 8% Polyester.  
White colour.  
Confection with white trim.  
Hard polyurethane and PVC sole.  
Man size.



## SHOWER CURTAINS

---

100% water repellent polyester.

Repels water and does not shrink.

Confection without a hem at the bottom, to prevent the formation of mould, featuring lateral hems.

Available in two diferents confections: Shirring ribbon with hangers or with holes ribbon.

White colour.

Curtain height: 180 cm or 200 cm.

Curtain width: Double the length of the curtain rail.

**Shirring ribbon with hangers**



**Ribbon with holes**



## BEACH TOWEL REF. BEACH 490 G/M2 TERRACOTTA 840 COLOUR

---

100% cotton extra, single loop terry.  
Indanthren colour, excellent fastness.  
Ideal towel for the beach and swimming pool.  
Unit weight 706 g (1.556 lb)

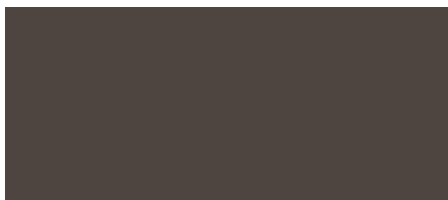


80 x 180 cm  
31" x 71"

## BEACH TOWEL REF. CHOCOLATE 490 G/M<sup>2</sup> BROWN 540 COLOUR

---

100% cotton extra, single loop terry.  
Indanthren colour, excellent fastness.  
Ideal towel for the beach and swimming pool.  
Unit weight 706 g (1.556 lb)



80 x 180 cm  
31" x 71"





## BEACH TOWEL REF. TUMBONA 400 G/M<sup>2</sup> BEIGE 503 COLOUR

---

100% cotton extra, double loop terry.  
Indanthren colour, excellent fastness.  
Perfect for sunloungers and deckchairs.  
Unit weight 640 g (1.411 lb)



80 x 200 cm  
31" x 79"

## BEACH TOWEL REF. CONFORT 450 G/M<sup>2</sup> YELLOW 631 COLOUR

---

100% cotton extra, double loop terry.  
Indanthren colour, excellent fastness.  
Light and soft towel.  
Unit weight 675 g (1.488 lb)



100 x 150 cm  
39" x 59"

## BEACH TOWEL REF. SUMMER 450 G/M<sup>2</sup> GREY 212 COLOUR

---

100% cotton extra, double loop terry.  
Indanthren colour, excellent fastness.  
Suitable for wrapping around the body, due to its size.  
Peso unidad 945 g (2.083 lb)



105 x 200 cm  
41" x 79"





## BEACH TOWEL REF. MÁSTER 480 G/M<sup>2</sup> BLUE 866 COLOUR

---

100% cotton extra, double loop terry.  
Indanthren colour, excellent fastness.  
Multiple uses: gym, sauna, spa, beach or swimming pool.  
Unit weight 540 g (1.190 lb)



80 x 140 cm  
31" x 55"

## BEACH TOWEL REF. ELEGANCE 480 G/M<sup>2</sup> GOLD 656 COLOUR

---

100% cotton extra, double loop terry.  
Indanthren colour, excellent fastness.  
Very comfortable towel.  
Unit weight 815 g (1.796 lb)



90 x 185cm  
35" x 73"

## BEACH TOWEL REF. TOPO 500 G/M<sup>2</sup> BEIGE 376 COLOUR

---

100% cotton extra, double loop terry.  
Indanthren colour, excellent fastness.  
Perfect for sunloungers and deckchairs.  
Unit weight 800 g (1.763 lb)



80 x 200 cm  
31" x 79"





**BEACH TOWEL REF. SICILIA 550 G/M² BLUE AND WHITE COLOUR**

---

100% cotton extra, double loop terry.  
Indanthren colour, excellent fastness.  
Design and distinctiveness at the seaside.  
Unit weight 990 g (2.182 lb)



100 x 180 cm  
39" x 71"

**BEACH TOWEL REF. TOSCANA 600 G/M² YELLOW AND WHITE COLOUR**

---

100% cotton extra, double loop terry.  
Indanthren colour, excellent fastness.  
Towel to adorn the beach or swimming pool.  
Unit weight 865 g (1.906 lb)



90 x 160 cm  
35" x 63"

























**ROOM**

---

## PILLOWS AND SQUARE PILLOWS

A fluffy bed, full of pillows and square pillows, is a trend that is now seen at hotels all across the world. These elements create a cozy and different setting, so that the guest can be comfortable and feel right at home.

Pillows play an essential role to create this feeling. In addition to the comfort they provide, they are combined with decorative cushions in the same color as the elements of the hotel room to contrast with the white of the sheets.

There are establishments that can layer up to 10 or 12 pillows on the bed. To distribute them in a careful and coordinated way, pillows, square pillows and decorative cushions are arranged in pairs, according to their shapes and, usually, from the biggest to the smallest ones, although there can be size variations in the middle of the composition.

### RECOMMENDED SIZES

BED WIDTH	PILLOW SIZE
80cm	40x80cm
90cm	40x90cm
100cm (39" Twin)	40x100cm ó 50x90cm (20"x 35" Twin)
105cm (41" Twin)	40x100cm ó 50x90cm (20"x 35" Twin)
110cm	40x100cm ó 50x90cm
120cm	40x120 cm ó 2x (40x60cm)
135cm (53" Queen)	40x135cm ó 2x (40x70cm) ó 2x (50x70cm) (20"x 28" Queen)
150cm (59" Queen)	2x (40x70cm) ó 2x (50x70cm) (20"x 28" Queen)
160cm	2x (40x70cm) ó 2x (50x70cm)
180cm (71" King)	2 x (40x90cm) ó 2 x (50x90cm) (20"x 35" King)
200cm (79" King)	2 x (40x100cm) ó 2 x (50x90cm) (20"x 35" King)

SQUARE PILLOW SIZE	ROLLER PILLOW SIZE
40x40cm (16"x 16")	15x30cm (6"x 12")
45x45cm (18"x 18")	15x50cm (6"x 20")
50x50cm (20"x 20")	15x65cm (6"x 26")
55x55cm (22"x 22")	15x70cm (6"x 28")
60x60cm (24"x 24")	15x90cm (6"x 35")
65x65cm (26"x 26")	15x100cm (6"x 39")
70x70cm (28"x 28")	



## PILLOW MENU

When someone goes to bed, they use the pillow that suits them best to get a good sleep, since, based on their sleeping position, they must use the pillow most adapted to their needs. Pillows are linked to health at night, so hotels offer menus with different pillow types for every kind of person.

To **sleep on your stomach**, the best choice is a soft and low pillow.

To **sleep on your back or if you change your sleeping position repeatedly**, you must choose a pillow of medium height and medium firmness.

To **sleep on your side**, you will need a thick and firm enough pillow.

For people with **neck injuries**, it is best to go for a special pillow that conforms to the neck.

FIRMNESS OF THE PILLOW	RECOMMENDATIONS	REFERENCE
Soft quality	To sleep on your stomach	Ref. Polyfiber basic Ref. Ecológica Ref. Ecológica Especial Ref. Superplum Ref. Oca
Medium quality	To sleep on your back or if you change your sleeping position repeatedly	Ref. Tacto Ref. Sweet Relax Ref. Universal Media Ref. Polyfiber Ref. Mix Polyfiber-Hibrison
Natural-medium quality	To sleep on your back or if you change your sleeping position repeatedly	Ref. Microplum Ref. Firmeplum Basic Ref. Firmeplum Ref. Templum Basic Ref. Templum
Medium-hard quality	To sleep on your side	Ref. Hibrison Classic Ref. Hibrison Ball Ref. Danubio
Hard quality	To sleep with a high and firm support	Ref. Anatómica
Special pillows	For people with neck problems or injuries	Ref. Mariposa Ref. Microgel Ref. Visco Gel Ref. Viscotex Ref. Cervical
Roller pillows	To have maximum support in the neck, ideal accessory for bali beds and spa stretchers.	Ref. Rulo Espuma Ref. Rulo Polyfiber



## SOFT QUALITY

---

They ensure softness and comfort thanks to their special filling. These pillows allow a gentle rest. They are not very firm, therefore they are appropriate for those who sleep on their stomach.



### REF. POLYFIBER BASIC

**Exterior fabric:** 100% cotton.

**Filling:** 100% polyester, siliconised and carded hollow fibre.



### REF. ECOLÓGICA

**Exterior fabric:** 100% cotton downproof.

**Filling:** 50% down, 50% small duck feathers.



### REF. ECOLÓGICA ESPECIAL

**Exterior fabric:** 100% cotton downproof.

**Filling:** 70% down, 30% small duck feathers.



### REF. SUPERPLUM

**Exterior fabric:** 100% cotton downproof.

**Filling:** External camera 90% down 10% small duck feathers and interior camera 15% down 85 % small duck feathers.



### REF. OCA

**Exterior fabric:** 100% cotton downproof.

**Filling:** 30% small goose feathers 70% down or 70% small goose feathers 30% down or 20% small goose feathers 80% down or 80% small goose feathers 20% down.

## MEDIUM QUALITY

---

Filled with hollow fibre, they are breathable and cool.

Firmer and thicker than feather pillows, they are appropriate for people who sleep on their back or change their sleeping position repeatedly, since they have a high recovery capacity to bounce back to their shape immediately.



### REF. TACTO

**Exterior fabric:** 100% polypropylene.

**Filling:** 100% polyester, siliconised and carded hollow fibre.



### REF. SWEET RELAX

**Exterior fabric:** 100% cotton.

**Filling:** 100% polyester, siliconised and carded hollow fibre.



### REF. UNIVERSAL MEDIA

**Exterior fabric:** 100% polyester microfibre.

**Filling:** 100% polyester, siliconised and carded hollow fibre.



### REF. POLYFIBER

**Exterior fabric:** 100% cotton.

**Filling:** 100% polyester, siliconised and carded hollow fibre.



### REF. MIX POLYFIBER-HIBRISON

**Exterior fabric:** 100% cotton downproof.

**Filling:** 100% polyester fibre balls.

## NATURAL-MEDIUM QUALITY

---

Pillows that combine the high recovery capacity of fiber with the natural components of the feathers and down which allow a gentle rest. As they are combined with fibre, they are firmer and thicker than pillows which contain feathers and down only, so they are ideal for people who sleep on their back or change their sleeping position repeatedly.



### REF. MICROPLUM

**Exterior fabric:** 100% cotton downproof.

**Filling:** 50% down (70% small feathers– 30% down) 50% microfibre.



### REF. FIRMEPLUM BASIC

**Exterior fabric:** 100% cotton downproof.

**Filling:** 60% down (20% down 80% small feathers) 40% polyester siliconized hollow fibre balls.



### REF. FIRMEPLUM

**Exterior fabric:** 100% cotton downproof.

**Filling:** 60% down (60% down 40% small feathers) 40% polyester siliconized hollow fibre balls.



### REF. TEMPLUM BASIC

**Exterior fabric:** 100% cotton downproof.

**Filling:** 60% small feathers (20% down 80% small feathers) 40% Tencel (75% Lyocel 25% polyester)



### REF. TEMPLUM

**Exterior fabric:** 100% cotton downproof.

**Filling:** 60% down (60% down 40% small feathers) 40% Tencel (75% Lyocel 25% polyester)



## MEDIUM-HARD QUALITY

---

With high capacity of recovery, they provide a pleasant comfort and rest.

Filled with hollow fibre, they are breathable and cool.

They are appropriate for people who need to sleep on their side. They are firm, but not too hard, so they have a high recovery capacity to bounce back to their shape immediately.



### **REF. HIBRISON CLASSIC**

**Exterior fabric:** 100% cotton downproof.

**Filling:** 100% polyester, siliconised and conjugated hollow fibre.



### **REF. HIBRISON BALL**

**Exterior fabric:** 100% cotton downproof.

**Filling:** 100% polyester siliconised and conjugated fibre balls.



### **REF. DANUBIO**

**Exterior fabric:** 100% cotton with sanitized treatment.

**Filling:** 100% polyester fibre Comforel –eco Drancon (hypoallergenic polyester)

## HARD QUALITY

---

Compact pillows filled with a block of latex for people who like to sleep with a high and firm support.

They don't get deformed after the pressure of the head and the neck.

They totally conform to the shape of the body, providing it a restful sleep. They are also ideal for people with allergies.



### REF. ANATÓMICA

**Exterior fabric:** Double case:

Exterior 100% cotton - interior 70% cotton  
30% polyester (knit)

**Filling:** 100% latex.

## SPECIAL PILLOWS

---

Perfect for people with neck problems or injuries.

With different types of filling, they allow a restful and healthy sleep, taking maximum care of the physical form.



### REF. MARIPOSA

**Exterior fabric:** 100% cotton.

**Filling:** 100% polyester siliconised hollow fibre.



### REF. MICROGEL

**Exterior fabric:** 100% cotton.

**Filling:** Microfibre with gel treatment.



### REF. VISCO GEL

**Exterior fabric:** 50% cotton -50% polyester.

**Filling:** 100% visco-elastic memory foam.



### REF. VISCOTEX

**Exterior fabric:** 50% cotton -50% polyester.

**Filling:** 100% polyester, carded hollow fibre, helix structure, visco-elastic and thermal cylinder core.



### REF. CERVICAL

**Exterior fabric:** Double case: exterior 100% cotton with stripes - interior 70% cotton 30% polyester (knit)

**Filling:** 100% latex.



## ROLLER PILLOWS

---

Roller pillows ensure maximum support at the neck curve, while being also an ideal accessory for bali beds and spa stretchers.



### **REF. RULO ESPUMA**

**Exterior fabric:** 100% cotton.

**Filling:** Polyurethane foam.



### **REF. RULO POLYFIBER**

**Exterior fabric:** 100% cotton.

**Filling:** 100% polyester, siliconized hollow fibre.

## INSIDE CASES

---

### REF. RASO ALGODÓN

**Fabric:** 100% sanforized cotton.

**Inside pillow case confection:** With zip or flap.

**Inside mattress case:** Complete cover with zip, or half-cover with four fitting points.

**Colour:** White.

### REF. RASO POLIÉSTER - ALGODÓN

**Fabric:** 35% polyester 65% sanforized cotton.

**Inside pillow case confection:** With zip or flap.

**Colour:** White.

## BED MAT

---

### REF. CORAL BANDA SATÉN

**Composition:** 100% cotton.

**Confection:** 1 cm Hem.

**Colour:** White.



50 x 100 cm  
20" x 39"  
**Bed mat**



## MATTRESS PROTECTORS

---

The memory that remains etched after staying at a hotel is closely linked to rest.

**Guests want to feel at home**, not only for the atmosphere created by the elements composing the room, but also for the comfort that the bed provides.

The experience can be terrible if you have a bad sleep due to a noisy or too warm mattress protector. In the latter case, many guests end up taking it off, which can result in damages to the mattress.

**The new sleeping concept** which customers demand has made Resuinsa research on the products they are developing to meet these needs, as has been the case for the mattress protector so that it is not uncomfortable.

Although it is an accessory that remains in the background because it is not visible, its function is key, as it preserves the mattress and promotes rest. Therefore, it is an essential element to provide customers a pleasant and comfortable hotel experience.





## MATTRESS PROTECTORS - QUILTED

---



### REF. ACOLCHADO RIZO DOS CARAS

**Composition terry fabric:** 75% cotton 25% polyester.

**Filling:** 100% polyester fibre.

**Composition tight fitting:** 100% polyester microfibre.

**Finish:** Ultrasonic quilting.

**Confection:** Tight fitting with elastics all around.

**Colour:** White.

**Washable up to:** 40°



### REF. ACOLCHADO RIZO CON PVC

**Composition terry fabric:** 75% cotton 25% polyester.

**Filling:** 100% polyester fibre.

**Composition base:** Pvc laminate.

**Composition tight fitting:** 100% polyester microfibre.

**Finish:** Ultrasonic quilting.

**Confection:** Tight fitting with elastics all around.

**Colour:** White.

**Washable up to:** 90°

## MATTRESS PROTECTORS - QUILTED

---



### REF. ACOLCHADO TELA DOS CARAS

**Composition fabric:** 100% polyester microfibre.

**Filling:** 100% polyester fibre.

**Composition tight fitting:** 100% polyester microfibre.

**Finish:** Ultrasonic quilting.

**Confection:** Tight fitting with elastics all around.

**Colour:** White.

**Washable up to:** 60°



### REF. ACOLCHADO TELA DOS CARAS ESPECIAL

**Composition fabric:** 100% cotton.

**Filling:** 100% polyester, siliconised and hollow fibre.

**Composition tight fitting:** 50% cotton 50% polyester.

**Finish:** Ultrasonic quilting.

**Confection:** Tight fitting with elastics all around.

**Colour:** White.

**Washable up to:** 40°



### REF. ACOLCHADO TELA CON PVC

**Composition fabric:** 100% polyester microfibre.

**Filling:** 100% polyester fibre.

**Composition base:** Pvc laminate.

**Composition tight fitting:** 100% polyester microfibre.

**Finish:** Ultrasonic quilting.

**Confection:** Tight fitting with elastics all around.

**Colour:** White.

**Washable up to:** 40°

## MATTRESS PROTECTORS - POLYURETHANE

---



### REF. ECOLOGY

**Composition terry fabric:** 70% cotton 30% polyester.

**Composition base:** Polyurethane laminate.

**Composition tight fitting:** 100% polyester microfibre.

**Confection:** Tight fitting with elastics all around.

**Colour:** White.

**Washable up to:** 90°

Waterproof and breathable mattress protector.



### REF. ECOLOGY TENCEL TERMOPLUS

**Composition fabric:** 100% Tencel.

**Composition base:** Polyurethane laminate.

**Composition tight fitting:** 100% polyester (knit)

**Confection:** Tight fitting with elastics all around.

**Colour:** White.

**Washable up to:** 40°

Thermo-regulator, waterproof and breathable mattress protector.

## MATTRESS PROTECTORS – POLYURETHANE SANDWICH

---



### REF. COTTON SAND

**Composition exterior fabric:** 75% cotton  
25% polyester.

**Composition base:** Polyurethane laminate.

**Composition interior fabric:** 75% cotton  
25% polyester.

**Composition tight fitting:** 50% cotton 50% polyester.

**Confection:** Tight fitting with elastics all around.

**Colour:** White.

**Washable up to:** 95°



### REF. TENCEL SAND

**Composition exterior fabric:** 100% tencel.

**Composition base:** Polyurethane laminate.

**Composition interior fabric:** 100% tencel.

**Composition tight fitting:** 100% polyester (knit)

**Confection:** Tight fitting with elastics all around.

**Colour:** White.

**Washable up to:** 60°



## MATTRESS PROTECTORS - SANITARY

---



### REF. MICRO SANITARIO PLUS

**Composition fabric:** 100% polyester microfibre.

**Composition covering:** Polyurethane induction.

**Composition tight fitting:** 100% polyester microfibre.

**Confection:** Tight fitting with elastics all around.

**Colour:** White.

**Washable up to:** 95°

Waterproof and breathable mattress protector.



### REF. TENCEL SANITARIO PLUS

**Composition fabric:** 100% tencel.

**Composition covering:** Polyurethane induction.

**Composition tight fitting:** 100% polyester microfibre.

**Confection:** Tight fitting with elastics all around.

**Colour:** White.

**Washable up to:** 95°

Waterproof and breathable mattress protector.



### REF. RIZO PVC ENTERIZO

**Composition exterior fabric:** Terry 75% cotton - 25% polyester.

**Composition base:** Pvc laminate.

**Confection:** One-piece finish with the same fabric. Fitting with elastics all around.

**Colour:** White.

**Washable up to:** 90°

## TOPPERS

---

### REF. FIBRA CONFORT

**Exterior fabric:** 100% cotton twill.

**Filling:** 100% polyester, siliconised and conjugated hollow fibre.

**Filling density:** 1100 g/m<sup>2</sup>

**Confection:** 4 elastic corner fittings.

5cm in height with 4cm baffle boxes, finished with piping.

**Colour:** White.

### REF. PLUMA - PLUMÓN

**Exterior fabric:** 100% cotton twill.

**Filling:** 95% small duck feathers 30/40 mm and 5% duck down.

**Filling density:** 1900 g/m<sup>2</sup>

**Confection:** 4 elastic corner fittings.

5cm in height with 4cm baffle boxes, finished with piping.

**Colour:** White.



## TOPPERS

---



### REF. VISCOELÁSTICO 1,5 CM

**Composition exterior fabric:** 100% polyester.

**Composition middle layer filling:** 1.5 cm 100% memory foam (viscoelastic polyurethane), density 50 kg/m<sup>3</sup>.

**Composition lower fabric:** 100% cotton.

**Confection:** 4 elastic corner fittings.

Quilted with a button pattern and with an edge seal.

**Colour:** White.



### REF. VISCOELÁSTICO 3 CM

**Composition exterior fabric:** 100% polyester.

**Composition upper layer filling:** 1.5 cm Memory foam (viscoelastic polyurethane), density 50 kg/m<sup>3</sup>.

**Composition middle layer filling:** 2 cm Memory foam (viscoelastic polyurethane), density 40 kg/m<sup>3</sup>.

**Composition lower fabric:** 100% cotton.

**Confection:** 4 elastic corner fittings.

Quilted with a button pattern and with an edge seal.

**Colour:** White.





### **REF. VISCOELÁSTICO 5 CM**

**Composition exterior fabric:** 100% polyester Stretch.

**Composition middle layer filling:** 5 cm 100% memory foam (viscoelastic polyurethane), density 40 kg/m3.

**Composition lower fabric:** 100% polyester Stretch.

**Confection:** With zip and 4 elastic corner fittings.

**Colour:** White.

## **SOBRETOPPERS**

---



### **REF. RASO ALGODÓN**

#### **REF. RASO ALGODÓN**

**Fabric:** 100% sanforized cotton.

**Confection:** 4 elastic corner fittings.

Corners with safety stitching.

**Colour:** White.

## DUVETS

### REF. POLYFIBER

**Exterior fabric:** 100% cotton.

**Filling:** 100% polyester, siliconised and carded hollow fibre.

**Filling density:** 125 g/m2, 250 g/m2, 400 g/m2 or Dúo version (125 g/m2 +250 g/m2 with fasteners)

**Confection:** Quilted horizontal channels, 28/30cm wide.

With piping around the border.

**Colour:** White.

### REF. MICROFIBRA

**Exterior fabric:** 100% polyester microfibre.

**Filling:** 100% polyester, siliconised and carded hollow fibre.

**Filling density:** 125 g/m2, 250 g/m2, 400 g/m2 or Dúo version (125 g/m2 +250 g/m2 with fasteners)

**Confection:** Quilted horizontal channels, 28/30cm wide.

With piping around the border.

**Colour:** White.

### REF. PLUMA - PLUMÓN

**Exterior fabric:** 100% cotton downproof.

**Filling:** 90% down 10% small duck feathers 30/40 mm.

**Filling density:** 250 g/m2

**Confection:** Cover with interior baffling.

Double stitched finish with piping.

**Colour:** White.

## RECOMMENDED SIZES

BED SIZE	DUVET SIZE
80-90x190cm	150x200cm
80-90x200cm	150x220cm
100-105x190cm	180x200cm
100-105x200 (39" - 41" Twin)	180x220cm (71"x87" Twin)
110x190cm	190x200cm
110x200cm	190x220cm
120x190cm	200x200cm
120x200cm	200x220cm
135x190cm	220x200cm
135x200cm (53" Queen)	220x220cm (87"x87" Queen)
150x190cm	240x200cm
150X200cm (59" QUEEN)	240X220cm (95"X87" QUEEN)
160X190cm	250X200cm
160X200cm	250X220cm
180X190cm	260X200cm
180X200cm (71" KING)	260X220cm (102"X87" KING)
200X200cm (79" KING)	280X220cm(110"X87" KING)



## BLANKETS

### REF. POLAR

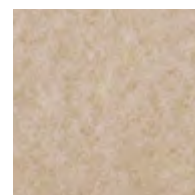
**Fabric:** 100% polyester.

**Weight:** 300 g/m2.

**Confection:** With flat 1.5 cm backstitching.

**Colour:** Beige. Contact us for other colours.

Fleece texture, very soft.



### REF. ANETO

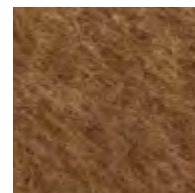
**Fabric:** 88% acrylic 12% polyester.

**Weight:** 400 g/m2.

**Confection:** With a complete ribbon border.

**Colour:** Beige. Contact us for other colours.

Long-fibre blanket.



## RECOMMENDED SIZES

BED SIZE	BLANKET SIZE
80-90x190cm	160x220cm
80-90x200cm	160x240cm
100-105x190cm	180x220cm
100-105x200 (39" - 41" Twin)	180x240cm (71"x95" Twin)
110x190cm	180x220cm
110x200cm	180x240cm
120x190cm	200x220cm
120x200cm	200x240cm
135x190cm	200x220cm
135x200cm (53" Queen)	200x240cm (79"x95" Queen)
150x190cm	220x220cm
150x200cm (59" Queen)	220x240cm (87"x95" Queen)
160x190cm	220x220cm
160x200cm	220x240cm
180x190cm	260x220cm
180x200cm (71" King)	260x240cm (102"x95" King)
200x200cm (79" King)	280x240cm (110"x95" King)





## BLANKETS

### REF. AITANA

**Fabric:** 100% polyester.

**Weight:** 280 g/m2.

**Confection:** Borderer with sateen ribbon in the whole perimeter.

**Colour:** Beige. Other colours to be consulted.

Blanket of Raschel hair. Very soft tact.



### REF. MONTGÓ

**Fabric:** 100% polyester.

**Weight:** 480 g/m2.

**Confection:** Borderer with sateen ribbon in the whole perimeter.

**Colour:** Beige. Other colours to be consulted.

Blanket of Raschel hair. Very soft tact.



### REF. VENUS

**Fabric:** 85% acrylic 15% polyester

**Weight:** 600 g/m2.

**Confection:** Borderer with velour ribbon in the whole perimeter.

**Colour:** Beige. Other colours to be consulted.

Blanket of Raschel hair. Very soft tact.



## RECOMMENDED SIZES

BED SIZE	BLANKET SIZE
80-90x190cm	160x220cm
80-90x200cm	160x240cm
100-105x190cm	180x220cm
100-105x200 (39" - 41" Twin)	180x240cm (71"x95" Twin)
110x190cm	180x220cm
110x200cm	180x240cm
120x190cm	200x220cm
120x200cm	200x240cm
135x190cm	200x220cm
135x200cm (53" Queen)	200x240cm (79"x95" Queen)
150x190cm	220x220cm
150x200cm (59" Queen)	220x240cm (87"x95" Queen)
160x190cm	220x220cm
160x200cm	220x240cm
180x190cm	260x220cm
180x200cm (71" King)	260x240cm (102"x95" King)
200x200cm (79" King)	280x240cm (110"x95" King)





## QUILTS

---

Quilts are an item to take into account when choosing the linen for a hotel and they help to provide the guest an ideal rest.

We have quilts of exquisite quality, with different patterns that are resistant to industrial laundering and, at the same time, elegant. In this way, the bed is perfectly equipped and the room is given a simple and stylish touch, too.

From the most sophisticated to the most traditional ones, they create a pleasant atmosphere, becoming an important attraction in the room, since they cover the bed with elegance and offer great comfort depending on the time of the year.

### RECOMMENDED SIZES

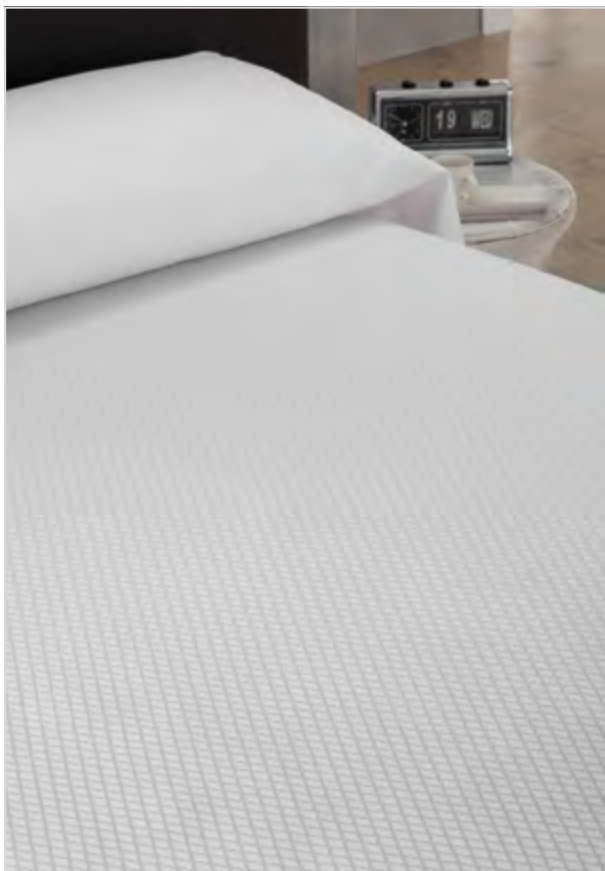
BED SIZE	QUILT SIZE
80-90x190cm	170x265cm
80-90x200cm	170x275cm
100-105x190cm	190x265cm
100-105x200 (39" - 41" Twin)	190x275cm (75"x108" Twin)
110x190cm	190x265cm
110x200cm	190x275cm
120x190cm	225x265cm
120x200cm	225x275cm
135x190cm	240x265cm
135x200cm (53" Queen)	240x275cm (95"x108" Queen)
150x190cm	250x265cm
150X200cm (59" QUEEN)	250X275cm (98"X108" QUEEN)
160X190cm	250X265cm
160X200cm	250X275cm
180X190cm	280X265cm
180X200cm (71" KING)	280X275cm (110"X108" KING)
200X200cm (79" KING)	300X275cm (118"X108" KING)





## QUILTS

---



### REF. PRINCESA PIQUÉ

**Fabric:** 100% cotton.

**Weight:** 220 g/m2.

**Confection:** Handkerchief model (rectangular) with 1.5 cm hems.

**Colour:** White.

### REF. ÁGATA PIQUÉ

**Fabric:** 50% polyester 50% cotton.

**Weight:** 220 g/m2.

**Confection:** Handkerchief model (rectangular) with 1.5 cm hems.

**Colour:** White.



### REF. OTOMÁN

**Fabric:** 50% polyester 50% cotton.

**Weight:** 280 g/m2.

**Confection:** Handkerchief model (rectangular) with 1.5 cm hems.

**Colour:** White.



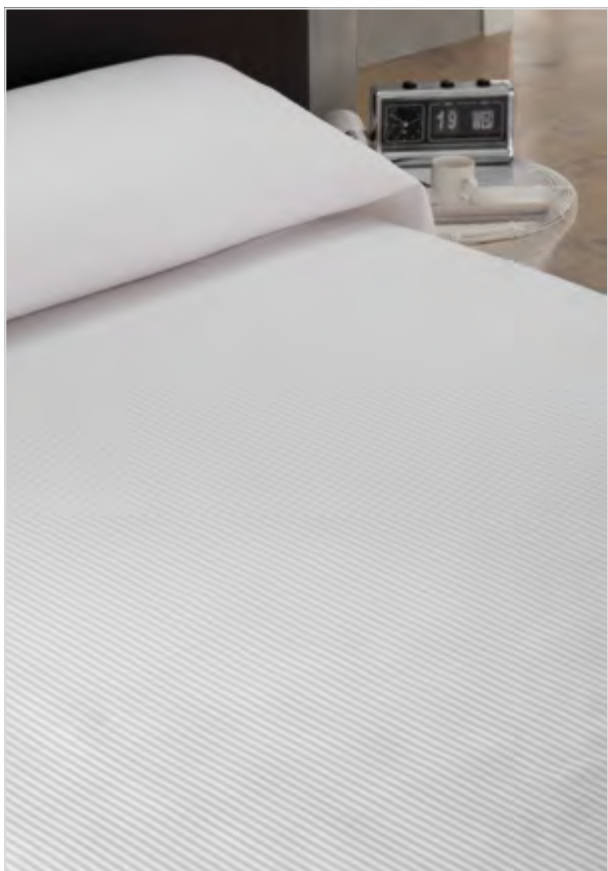
#### **REF. LISTADA**

**Fabric:** 56% polyester 44% cotton.

**Weight:** 285 g/m2.

**Confection:** Handkerchief model (rectangular) with 1.5 cm hems.

**Colour:** White.



#### **REF. STANLEY**

**Fabric:** 50% polyester 50% cotton.

**Weight:** 195 g/m2.

**Confection:** Handkerchief model (rectangular) with 1.5 cm hems.

**Colour:** White.

## SHEETS

We have a wide range of light, cool and highly durable sheets.  
A collection of percale (taffeta) sheets of 100% cotton and polyester cotton.

Three collections of sateen sheets, a collection of plain fabrics with thread counts ranging from 250 to 1000 (in white and other colors), another collection of striped sheets (white color) and a final exclusive collection with different designs on the edge of the latest trends.

They are all aimed at creating themed hotel rooms, always with an exclusive design, providing comfort and a beautiful look to the bed.

### COLLECTION PERCALE (TAFFETA) SHEETS: 100% cotton and polyester cotton.

REFERENCE	COMPOSITION
P-25	50% Polyester 50% Cotton
P-50	50% Polyester 50% Cotton
P-30	20% Polyester 50% Cotton
Alameda	50% Polyester 50% Cotton
Condal	100% Cotton
Cairo A5	100% Cotton
Cairo AF	100% Cotton
Luxor	100% Cotton
Luxor 40	100% Cotton
Luxor Plus	100% Cotton
Galveston	100% Cotton
Houston	100% Cotton
Miami	100% Cotton
Alabama	100% Cotton





**COLLECTION SATEEN (PLAIN) SHEETS:** From 250 to 1.000 threads.

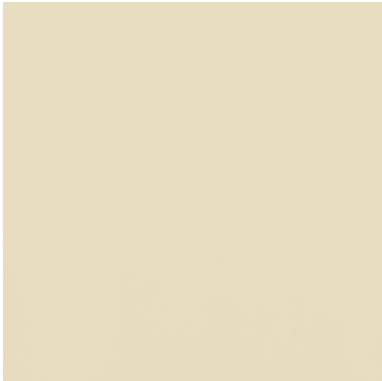
REFERENCE	COMPOSITION	THREADS	DESIGN	COLOUR
Denver	50% polyester 50% Cotton	250 Threads	Plain	White
Dover	100% Cotton	300 Threads	Plain	White, Ivory, Beige, Grey, Blue
Dover Plus Fresh Sateen	100% Cotton	300 Threads	Plain	White
Milton	100% Cotton	400 Threads	Plain	White
Bristol	100% Cotton	500 Threads	Plain	White
Oregon	100% Cotton	600 Threads	Plain	White
Eloy	100% Cotton	700 Threads	Plain	White
Salem	100% Cotton	800 Threads	Plain	White
Davis	100% Cotton	900 Threads	Plain	White
Avalon	100% Cotton	1000 Threads	Plain	White



DOVER WHITE



DOVER IVORY



DOVER BEIGE



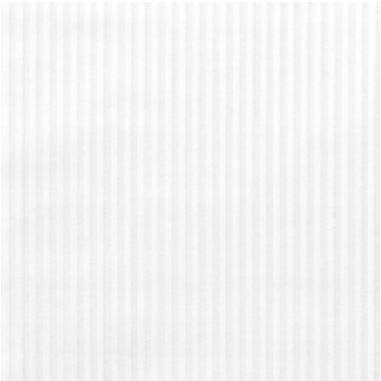
DOVER GREY



DOVER BLUE

COLLECTION SATEEN (STRIPED DESIGN) SHEETS

REFERENCE	COMPOSITION	THREADS	DESIGN	COLOUR
Branson 200	50% Polyester - 50% Cotton	200 Threads	2 mm striped	White
Branson 280	100% Cotton	280 Threads	2 mm striped	White
Adair 200	100% Cotton	200 Threads	4,5 mm striped	White
Adair 300	100% Cotton	300 Threads	4,5 mm striped	White
Boston 200	100% Cotton	200 Threads	10 mm striped	White
Boston 250	40% Polyester - 60% Cotton	250 Threads	10 mm striped	White
Boston 300	100% Cotton	300 Threads	10 mm striped	White
Hollywood 200	100% Cotton	200 Threads	19 mm striped	White
Hollywood 200 SF	100% Cotton	200 Threads	19 mm striped	White
Hollywood 200	50% Polyester - 50% Cotton	200 Threads	19 mm striped	White
Hollywood 250	50% Polyester - 50% Cotton	250 Threads	19 mm striped	White



BRANSON WHITE



ADAIR WHITE



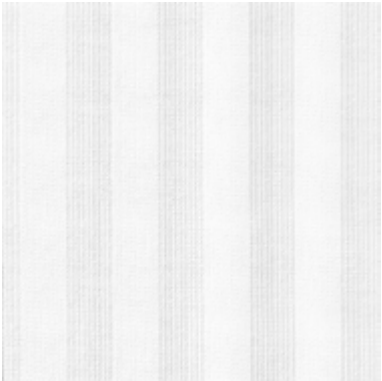
BOSTON WHITE



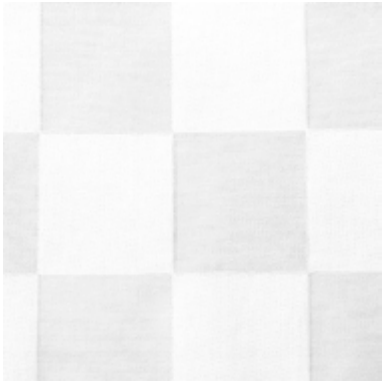
HOLLYWOOD WHITE

**COLLECTION SATEEN (DESIGNS LATEST TRENDS) SHEETS:**  
 From 200 to 500 threads, white colour and trends colours.

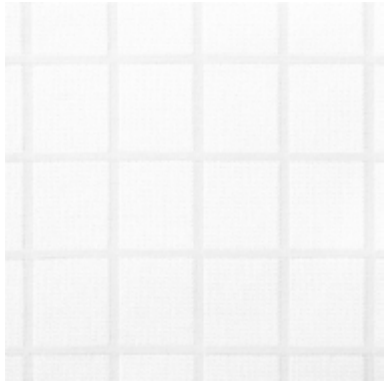
REFERENCE	COMPOSITION	THREADS	COLOUR
Apex 200	50% Polyester 50% Cotton	200 Threads	White
Dakota 200	100% Cotton	200 Threads	White
Virginia 200	100% Cotton	200 Threads	White
Acqua 300	100% Cotton	300 Threads	White
Grid 300	100% Cotton	300 Threads	White
Denton 300	100% Cotton	300 Threads	White, Ivory
Madison 300	100% Cotton	300 Threads	White, Ivory, Blue
Jersey 300	100% Cotton	300 Threads	White, Ivory
Allen 300	100% Cotton	300 Threads	White, Ivory
Brio 300	100% Cotton	300 Threads	White, Ivory
Albany 300	100% Cotton	300 Threads	White, Ivory
Berkeley 300	100% Cotton	300 Threads	White, Ivory
Tucson 300	100% Cotton	300 Threads	White, Ivory
Austell 350	100% Cotton	350 Threads	White
Basalt 350	100% Cotton	350 Threads	White
Illinois 500	100% Cotton	500 Threads	White, Ivory, Grey, Blue



APEX WHITE



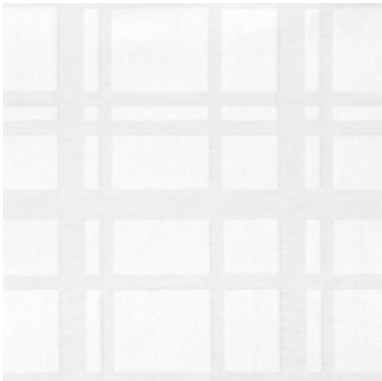
DAKOTA WHITE



VIRGINIA WHITE



ACQUA WHITE



GRID WHITE





DENTON WHITE



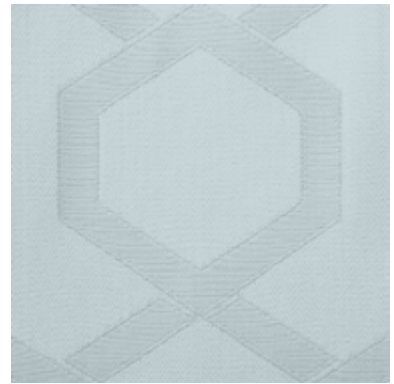
DENTON IVORY



MADISON WHITE



MADISON IVORY



MADISON BLUE



JERSEY WHITE



JERSEY IVORY



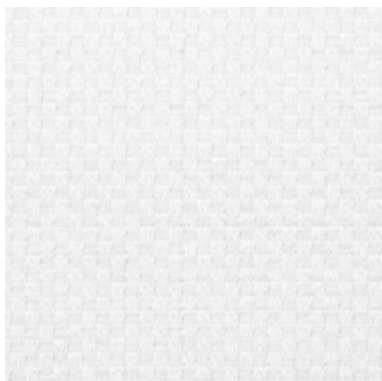
ALLEN WHITE



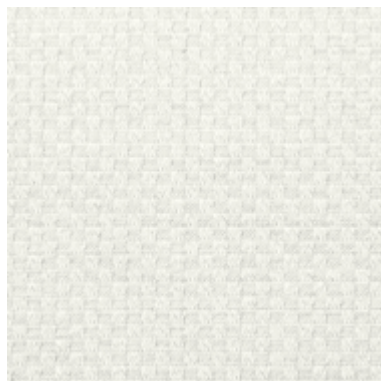
ALLEN IVORY

**COLLECTION SATEEN (DESIGNS LATEST TRENDS) SHEETS:**  
From 200 to 500 threads, white colour and trends colours.

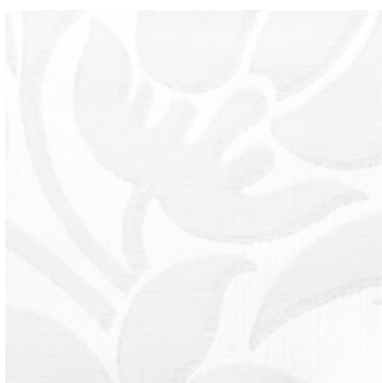
---



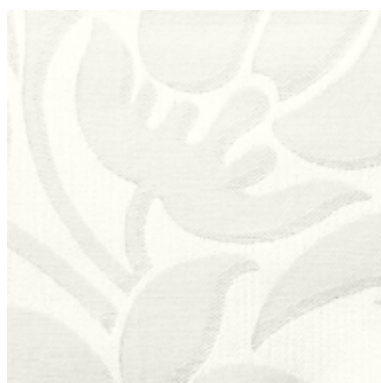
BRIO WHITE



BRIO IVORY



ALBANY WHITE



ALBANY IVORY



BERKELEY WHITE



BERKELEY IVORY



TUCSON WHITE



TUCSON IVORY



AUSTELL WHITE



BASALT WHITE



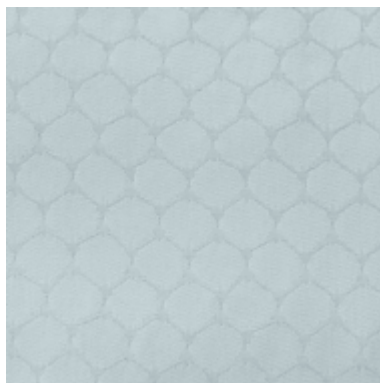
ILLINOIS WHITE



ILLINOIS IVORY



ILLINOIS GREY



ILLINOIS BLUE

## SHEETS

---

### TOP SHEETS CONFECTIONS

**Top sheets:** Broad 5 cm hem at the top and 1 cm hem at the bottom.  
Can also be specially made with top hem of 7 cm, 8 cm or 10 cm.

### BOTTOM SHEETS CONFECTIONS

**Unfitted:** No broad hem, just 1 cm hem.

**Fitted:** Same size as the bed, with elastic corners.

Important to inform us of the height of the mattress.

### RECOMMENDED SIZES

BED SIZE	SHEET WIDTH
80cm	160-170cm
90cm	160-170cm
100cm (39" Twin)	190cm (75" Twin)
105cm (41" Twin)	190cm (75" Twin)
110cm	210cm
120cm	210cm
135cm (53" Queen)	225cm (89" Queen)
150cm (59" Queen)	240-250cm (95"- 98" Queen)
160cm	250cm
180cm (71" King)	280-290cm (110" – 114" King)
200cm (79" King)	300cm (118" King)





## PILLOWCASES

### PILLOWCASE CONFECTIONS

**Two-opening pillowcase:** 5cm hem at each opening.

**One-opening pillowcase:** Sack type, closed at one end and with a single 5 cm fold.

**Special pillowcase:** Sack type with a single 5 cm hem and an inner flap.

All pillowcases can be made with 7 cm, 8 cm or 10 cm hems.

### SQUARE PILLOWCASES CONFECTIONS

**Square pillowcase:** With a ruffle of 5 or 8 cm and a 20 cm rear flap.

**Special square pillowcase:** Without a ruffle.

### RECOMMENDED SIZES

PILLOW SIZE	PILLOWCASE SIZE
40x80cm	44x100cm
40x90cm	44x110cm
40x100cm ó 50x90cm (20"x35" Twin)	44x120cm ó 55x110cm (22"x43" Twin)
40x100cm ó 50x90cm (20"x35" Twin)	44x120cm ó 55x110cm (22"x43" Twin)
40x100cm ó 50x90cm	44x120cm ó 55x110cm
40x120 cm ó 2x (40x60cm)	44x140 cm ó 2x (44x80cm)
40x135cm	44x155cm
2x (40x70cm)	2x (44x90cm)
2x (50x70cm) (20"x28" Queen)	2x (55x90cm) (22"x35" Queen)
2x (40x70cm)	2x (44x90cm)
2x (50x70cm) (20"x28" Queen)	2x (55x90cm) (22"x35" Queen)
2x (40x70cm) ó 2x (50x70cm)	2x (44x90cm)2x (55x90cm)
2 x (40x90cm)	2 x (44x110cm)
2 x (50x90cm) (20"x35" King)	2 x (55x110cm) (22"x43" King)
2 x (40x100cm)	2 x (44x120cm)
2 x (50x90cm) (20"x35" King)	2 x (55x110cm) (22"x43" King)

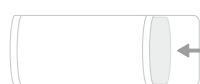
SQUARE PILLOW SIZE	SQUARE PILLOWCASE SIZE
40x40cm	47x47cm interior measure + 8cm ruffle
45x45cm	52x52cm interior measure + 8cm ruffle
50x50cm	56x56cm interior measure + 8cm ruffle
55x55cm	62x62cm interior measure + 8cm ruffle
60x60cm	67x67cm interior measure + 5cm ruffle
65x65cm	72x72cm interior measure + 5cm ruffle
70x70cm	77x77cm interior measure + 5cm ruffle



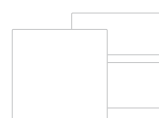
Two-opening pillowcase



One-opening pillowcase



Special pillowcase



Square pillowcase



Special square pillowcase



## DUVET COVERS

We make a different duvet cover confections, the most usuals are:

**Basic duvet cover:** Complete cover, with an inner 40 cm flap and lateral openings at the top (hand openings)

**Sack-type duvet cover with narrowed opening:** Complete cover with no flap (sack type) and lateral openings at the top (hand openings)

**Reverse duvet cover:** Complete cover with an outer 40 cm flap (to fold over as if it were a top sheet) and lateral openings at the top (hand openings)

**Square duvet cover:** Complete cover with an inner 40 cm flap, Oxford-style border and lateral openings at the top (hand openings)

**Bottle-type duvet cover:** Complete cover without flap (bottle-shaped in order to tuck under the mattress) and lateral openings at the top (hand openings)

**Duvet cover with top-sheet effect:** Complete cover with an inner 40 cm flap, lateral openings at the top (hand openings) and a broad 5 cm hem.

## RECOMMENDED SIZES

BED SIZE	DUVET SIZE	DUVET COVER SIZE
80-90x190cm	150x200cm	160x220
80-90x200cm	150x220cm	160x240
100-105x190cm	180x200cm	190x220
100-105x200 (39"- 41" Twin)	180x220cm (71"x87" Twin)	190x240 (75"x95" Twin)
110x190cm	190x200cm	200x220
110x200cm	190x220cm	200x240
120x190cm	200x200cm	210x220
120x200cm	200x220cm	210x240
135x190cm	220x200cm	230x220
135x200cm (53" Queen)	220x220cm (87"x87" Queen)	230x240 (91"x95" Queen)
150x190cm	240x200cm	250x220
150x200cm (59" Queen)	240x220cm (95"x87" Queen)	250x240 (98"x95" Queen)
160x190cm	250x200cm	260x220
160x200cm	250x220cm	260x240
180x190cm	260x200cm	270x220
180x200cm (71" King)	260x220cm (102"x87" King)	270x240 (106"x95" King)
200x200cm (79" King)	280x220cm (110"x87" King)	290x240 (114"x95" King)





# CUSTOMIZATION

## DIFFERENT CONFECTIONS OF BED LINEN

IMAGE	CONFECTION
1	7 cm hem and piping nº 71
2	7 cm hem and piping nº 50
3	7 cm hem and straight double piping
4	7 cm hem and hemstitch
5	7 cm hem and piping nº 20
6	7 cm hem and piping nº 73
7	8 cm hem and appliqué straight piping
8	7 cm hem and piping nº 74
9	7 cm hem and piping nº 00
10	7 cm hem and straight piping
11	7 cm hem and sateen ribbon
12	7 cm hem and piping nº 18





1

2

4

3

5

7

6

8

10

9

11

12

## BEDSKIRTS

### REF. STRECH

**Composition:** Top 100% polyester. Skirt 100% polyester.  
**Colour:** Top white color. Skirt wide range of colours.  
**Basic confection:** With top and skirt, pleads in the inferior corners.  
**Adjustable confection:** With top and skirt, pleads in 4 corners. Adjustable tight-fitting, with gummed corners in the inferior side.

### REF. OXEN

**Composition:** Top 100% polyester. Skirt 55% acrylic 45% polyester.  
**Colour:** Top white color. Skirt wide range of colours.  
**Basic confection:** With top and skirt, pleads in the inferior corners.  
**Adjustable confection:** With top and skirt, pleads in 2 inferior corners. Adjustable tight-fitting, with gummed corners in the inferior side.

## PLAIDS

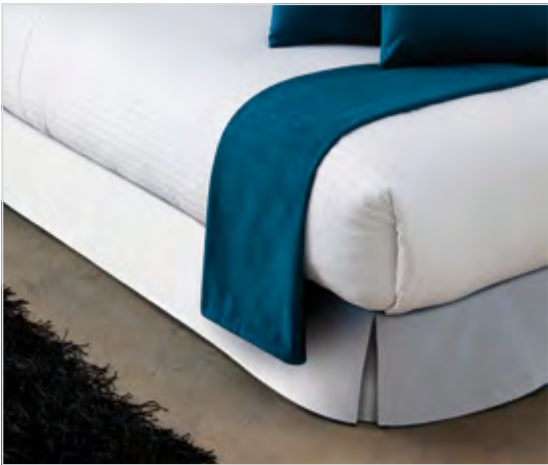
### REF. OXEN

**Composition** 55% acrylic, 45% polyester.  
**Colour:** 50 colours disponibles.  
**Confection simple plaid:** 2 cm hem.

BED SIZE	PLAID SIZE
90cm-105cm (Twin)	165x60 ó 165x130
120cm-135 cm-140 cm (Queen)	200x60 ó 200x130
150cm-160cm (Queen)	220x60 ó 220x130
180cm-200cm (King)	260x60 ó 260x130



Plaid Oxen



Strech bedskirt

















# RESTAURATION

---

## TABLE LINEN

### REF. CORAL SATÉN

**Fabric:** 100% Cotton.

**Confection:** 1 cm hems and capet corners.

Possibility to add embroideries, piping, bourdons, hemstitchs and other types of finishing.

**Finish:** Sateen or Soft System.

**Colour:** White and various colours (contact us for other colours)

### REF. ÁGATA SATÉN

**Fabric:** 50% Polyester 50% Cotton.

**Confection:** 1 cm hems and capet corners.

Possibility to add embroideries, piping, bourdons, hemstitchs and other types of finishing.

**Finish:** Sateen or Soft System.

**Colour:** White and various colours (contact us for other colours)

### RECOMMENDED SIZES

TABLE SIZE	TABLECLOTH SIZE	TABLETOP SIZE
80 x 80 cm	150 x 150 cm	110 x 110 cm
90 x 90 cm	160 x 160 cm	120 x 120 cm
80 x 110 cm	150 x 180 cm	110 x 140 cm
80 x 120 cm	150 x 200 cm	110 x 150 cm
100 x 100 cm	170 x 170 cm	130 x 130 cm
100 x 120 cm	170 x 190 cm	130 x 150 cm
100 x 130 cm	170 x 200 cm	130 x 160 cm
110 x 110 cm	180 x 180 cm	140 x 140 cm
120 x 120 cm	200 x 200 cm	150 x 150 cm
120 Ø cm	190 x 190 cm	150 x 150 cm
160 Ø cm	230 x 230 cm	190 x 190 cm
180 Ø cm	250 x 250 cm	210 x 210 cm
200 Ø cm	270 x 270 cm	230 x 230 cm

Note: You must add the shrinkage of each tissue.

Placemat size:

45 x 60

Napkin doliy size:

40 x 60

50 x 70

40 Ø

50 Ø





## TABLE LINEN

---

### REF. NATURE

**Fabric:** 50% Polyester 50% Cotton.

**Confection:** 1 cm hems and capet corners.

Possibility to add embroideries, piping, bourdons, hemstitchs and other types of finishing.

**Colour:** Weft colour.

### REF. ESTERILLA

**Fabric:** 50% Polyester 50% Cotton.

**Confection:** 1 cm hems and capet corners.

Possibility to add embroideries, piping, bourdons, hemstitchs and other types of finishing.

**Colour:** Weft colour.







## TABLE LINEN

---

### REF. LINO

**Fabric:** 100% Linen.

40 % Linen 60% Polyester.

60% Linen 40% Cotton.

PAL (30% Polyester 30% Cotton 40 % Linen)

**Confection:** Special confection.

Possibility to add embroideries, piping, bourdons, hemstitchs and other types of finishing.

**Finish:** Soft System.

**Colour:** Natural white and wide range of colours (consult availability)







## TABLE RUNNERS

TABLE SIZE	TABLE RUNNER SIZE
70 x 70 cm	50 x 100 cm
80 x 80 cm	50 x 110 cm
90 x 90 cm	55 x 120 cm
100 x 100 cm	55 x 130 cm
70 x 120 cm	50 x 150 cm
80 x 120 cm	50 x 150 cm
90 x 140 cm	55 x 170 cm







## DIFFERENT CONFECTIONS OF TABLE LINEN

---



2 hems of 5cm and straight piping



4 hems of 5cm and piping number 20



2 hems of 5cm and piping number 73



4 hems of 5cm and satin ribbon appliqué



4 hems of 5cm and piping number 18



4 hems of 5cm and double straight piping





2 hems of 5cm and bourdon piping



4 hems of 5cm and hemstitch



2 hems of 5cm and piping number 50



4 hems of 5cm and piping number 74



4 hems of 5cm and straight piping



2 hems of 5cm and piping number 71

## CHAIR COVERS

---

### REF. STRECH

**Fabric:** 100% Polyester.

**Colour:** White and wide range of colours.

**Confection:** Tailor-made.

























Radio Frequency Identification (RFID) is rapidly becoming one of the most expanding technologies in all sectors, and textile industry is one of the sectors with a greater potential for implementation.

RFID systems can contribute significantly to the improvement of hotel and industrial laundry procedures: automatize data collection, avoid errors, reduce costs and ultimately facilitate cooperation and information exchange.

RFID technology was already being used in other sectors, especially in the clothing sector for public consumption, but not in the hotel linen industry, since the textile items are subjected to extreme washing conditions at industrial laundries, making RFID implantation and label conservation more difficult.

However, as a result of the R&D&i project, Resuinsa can make use of a RFID UHF microchip (Ultra High Frequency, which allows multiple readings with no direct emission) in textile items for the hotel industry. These microchips are industrial-washing resistant. RFID technology implementation constitutes a noticeable added value to our products.

Thanks to its implementation, hotels can know the number of washes that every textile item has, how many pieces go to the laundry and how many pieces come back, the number of items stored on each floor of the hotel, and even a thorough theft control. In addition, the laundry operator will be able to know the real number of items on each load, and even control the laundry efficiency by monitoring the garments' service life.

RFID technology is an object identification system that relies on radio waves to transmit information. A tag that contains a small chip is attached to the product, and the chip can store information and transmit it to the reader via radio frequency.

This system allows the complete traceability of a product, from the material reception to its storage, keeping control of every movement.

## TEXTILES SUITABLES FOR INDUSTRIAL LAUNDRY



---

Industrial laundering is a very aggressive process that damages a normal piece of clothing.

The textile that undergoes this type of laundering must have an improved resistance while keeping its qualities through time, and being able to resist the harsh conditions of industrial laundering, which differs greatly from domestic wash.

In the industrial laundering process there are many aggressive agents, such as the wash temperature, the use of detergents and chemicals, the drying temperature and the calendaring and pressing temperature.

In order to guarantee the resistance of our products, Resuinsa has obtained a quality certificate in textile products suitable for industrial laundering, based on the norm UNE-EN ISO 15797:2004.

In order to obtain this certification, the fabrics must be resistant to products such as detergents without optical whitening and water peroxide as a bleaching agent. Textile items must resist 75°C washing and several drying and pressing processes.

The certificate grants quality criteria such as tensile strength, laminar mass, absorption capacity, degree of white and degree of polymerization (GDP).

Resuinsa is the first company in the world obtaining the industrial laundering certification, anticipating the needs of the sector and taking the leading role in terms of textile R&D&i.





---

Resuinsa has been the first company in the hospitality industry to obtain the worldwide certificate Standard STeP (Sustainable Textile Production), audited and issued by the International Association OEKO-TEX®.

The production carried out by every company must take place meeting some parameters of sustainability, both environmental and of corporate social responsibility.

The dynamic development of the STeP certification allows Resuinsa to continually improve its recognitions in environmental protection and social responsibility, as well as in its efficiency and effectiveness.

This differentiates it from other systems, which, for the most part, only consider some individual aspects of the sustainability. STeP allows an exhaustive and reliable analysis of the reach of sustainability in six different areas: chemicals management; environmental protection; environmental management; health and safety; social responsibility; and quality.

In this respect, to do this, OEKO-TEX® guarantees the compatibility at international level through standardised criteria that are constantly analysed, assessed and updated.

The International Association OEKO-TEX® has 15 member institutes and its representation offices are located in more than 60 countries all around the world. The OEKO-TEX® Institutes are accredited centres, for research, with their own textile analyses which enjoy an extensive knowledge and a long experience in terms of the specific conditions of the textile industry.





---

The STANDARD 100 by OEKO-TEX® is a worldwide consistent, independent testing and certification system for raw, semi-finished, and finished textile products at all processing levels, as well as accessory materials used.

The central focus of the STANDARD 100 by OEKO-TEX® has been the development of test criteria, limit values and test methods on a scientific basis.

On the basis of its comprehensive and strict catalogue of measures, with several hundred regulated individual substances, the STANDARD 100 by OEKO-TEX® takes account of:

- Important legal regulations, such as banned Azo colourants, formaldehyde, pentachlorophenol, cadmium, nickel, etc.
- Numerous harmful chemicals, even if they are not yet legally regulated.
- Requirements of Annexes XVII and XIV of the European Chemicals Regulation REACH as well as of the ECHA SVHC Candidate List.
- Requirements from the US Consumer Product Safety Improvement Act (CPSIA) regarding lead.
- Numerous also environmentally relevant substance classes.

With its decades of experience, the OEKO-TEX® Standard 100 therefore contributes to high and effective product safety from a consumer's point of view.

Test criteria and limit values in many cases go far beyond applicable national and international standards. Extensive product checks and regular company audits also ensure that the industry has a globally sustainable awareness of the responsible use of chemicals. With this concept, the OEKO-TEX® Standard 100 has taken on a pioneering role for many years.

The OEKO-TEX® tests for harmful substances are fundamentally based on the respective purpose of the textiles and materials.

The more intensive the skin contact of a product and the more sensitive the skin, the stricter the human-ecological requirements that need to be complied with.

**On June 30th 1998 Resuinsa obtained its first Standard 100 by OEKO-TEX®, a certificate which has been renewed annually since then.**

# WE ARE ALL AROUND THE WORLD



ALGERIA · ANDORRA · ANTIGUA & BARBUDA · ARGENTINA · ARUBA · AUSTRIA · BAHAMAS · BAHRAIN · BARBADOS  
BELGIUM · BENIN · BERMUDA · BRAZIL · BULGARIA · BURKINA FASO · CAMEROON · CANADA · CAPE VERDE  
CHILE · CHINA · CONGO REPUBLIC · COSTA RICA · CROATIA · CUBA · CYPRUS · CZECH REPUBLIC · DOMINICAN  
REPUBLIC · ESTONIA · FINLAND · FRANCE · GABON · GAMBIA · GERMANY · GIBRALTAR · GREECE · GUADELOUPE  
GUINEA-BISSAU · GUINEA REPUBLIC · HAITI · HUNGARY · IRELAND · ISRAEL · ITALY · IVORY COAST · JAMAICA  
JAPAN · KENYA · KUWAIT · KYRGYZSTAN · LEBANON · LIBYA · LUXEMBOURG · MADAGASCAR · MALDIVES · MALI  
MALTA · MARTINIQUE · MAURITIUS · MEXICO · MONTENEGRO · MOROCCO · NETHERLANDS · NEW CALEDONIA  
NIGERIA · NORWAY · OMAN · PANAMA · POLAND · PORTUGAL · PUERTO RICO · QATAR · ROMANIA · SAUDI  
ARABIA · SENEGAL · SLOVENIA · SOUTH KOREA · SPAIN · SRI LANKA · ST.MARTIN · SWEDEN · SWITZERLAND  
THAILAND · TOGO · TUNISIA · UKRAINE · UNITED ARAB EMIRATES · UNITED KINGDOM · URUGUAY · USA

## WE INVITE YOU TO BE A PART OF OUR WORLD...







**MAIN OFFICES**  
Avda Mare Nostrum, 50  
46120 (Alboraya) **VALENCIA - SPAIN**  
Tfno: +34 96 391 68 05  
Fax: +34 96 391 48 20  
[resuinsa@resuinsa.com](mailto:resuinsa@resuinsa.com)  
[www.resuinsa.com](http://www.resuinsa.com)